

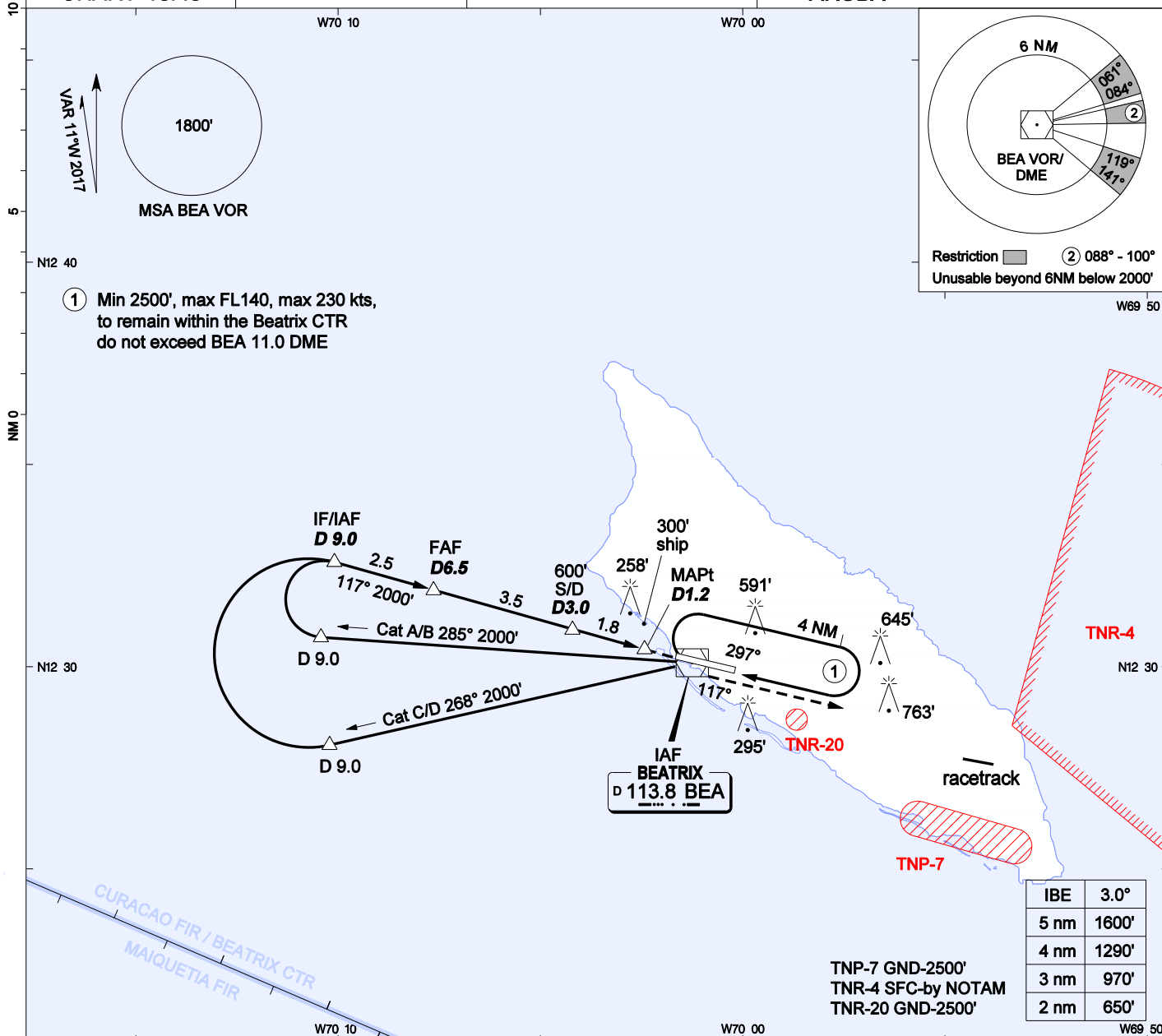
AIP DUTCH CARIBBEAN

**INSTRUMENT
APPROACH
CHART- ICAO**

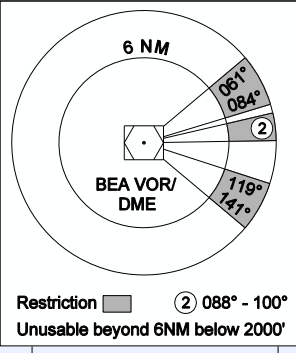
AD ELEVATION: 62'
TRANS LEVEL: FL 40
TRANS ALT: 2500' (2438')

BEATRIX:
APP/TWR 120.9 GND 118.0
APRON 121.6 ATIS 132.1

**VOR Y RWY 11
REINA BEATRIX INT'L (TNCA)
ARUBA**



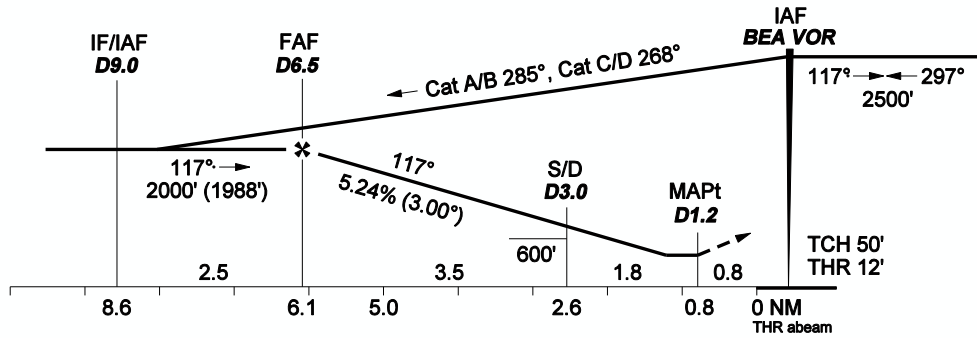
① Min 2500', max FL140, max 230 kts, to remain within the Beatrix CTR do not exceed BEA 11.0 DME



IBE	3.0'
5 nm	1600'
4 nm	1290'
3 nm	970'
2 nm	650'

TNP-7 GND-2500'
TNR-4 SFC-by NOTAM
TNR-20 GND-2500'

MISSED APPR: Climb on BEA R-117 to 1800', turn left climbing to 2500' in hold, or as directed by ATC.



OCA(H)	A	B	C	D	GROUNDSPEED - DESCENT RATE						
					KNOTS	70	90	100	120	140	160
STRAIGHT-IN	550' (538')	550' (538')	550' (538')	550' (538')	FT/MIN	372	478	531	637	743	849
CIRCLING	890' (828')	890' (828')	1160' (1098')	1160' (1098')							

1. Procedure not available when TNR-4 is active.
2. Bearings are magnetic, altitudes, elevations and heights in feet and distance in NM. Straight-in heights are relative to THR elevation, other heights are relative to AD elevation.

THR 11	N12 30	15.50	W070 01	38.98
MAPt D1.2	N12 30	25.75	W070 02	25.55
S/D D3.0	N12 30	55.64	W070 04	11.68
FAF D6.5	N12 31	53.88	W070 07	38.63
IF/IAF D9.0	N12 32	35.18	W070 10	05.53
D9.0 R-285	N12 30	43.50	W070 10	25.50
D9.0 R-268	N12 28	03.66	W070 10	12.61

CHANGES: Mag var date.